

# 62 PROSPECT STREET (D3.1)

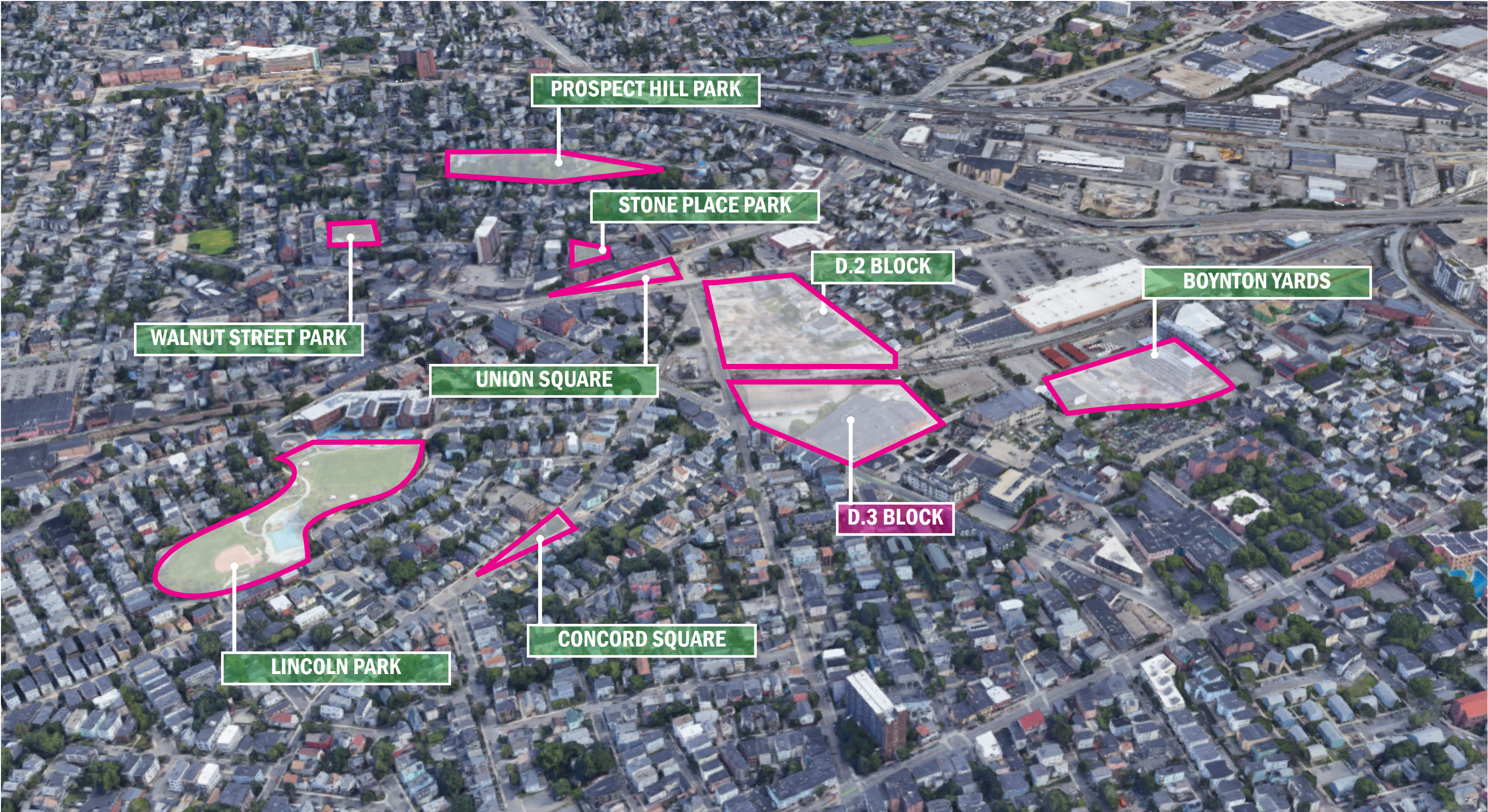
URBAN DESIGN COMMISSION SUBMISSION #2 | 11/23/21

CIVIC SPACE





# SITE LOCATION



50 WEBSTER



# PREVIOUS CIVIC SPACE DESIGN | OCTOBER 26, 2021

## WHAT WE HEARD

CONSIDER STREETScape IMPROVEMENTS TO CREATE A SAFER AND MORE ACCESSIBLE SIDEWALK CONDITION

CREATE LESS OF A PERCEIVED EDGE AT THE PROPERTY LINE

CREATE DISTINCTION THAT REFLECTS UNION SQUARE AND PROVIDE PROGRAM THAT IS OUTWARD FACING

DISTINGUISH GREEN ROOMS FROM ONE ANOTHER

CONSIDER LIMITING CIRCULATION THROUGH THE SITE AS IT REDUCES THE USE OF PLAZA AREAS

DEMONSTRATE GRADING ACROSS THE SITE

ADAPT 'CUT GLASS' HISTORY TO MATERIAL CHOICES AND INTEGRATION OF LIGHT



## OUR RESPONSE

REORIENT UPPER PLAZA TOWARD UNION SQUARE & D2 PLAZA

LEVERAGE NORTHERN PLAZA FOR PAVILION STRUCTURE AND ENCOURAGE VISIBILITY

ADD ELEMENTS OF SURPRISE AND DISTINCTION WITH COLORFUL FURNITURE AND LIGHTING FEATURES

CREATE SPACE FOR INTERACTIVE FEATURES AND ARTISTIC EXPRESSION AND DISPLAY

ADD A LARGE CONTIGUOUS PLANTER AT BASE OF BUILDING COLUMN AND ELIMINATE STAIR TO CREATE A UNIQUE EXPERIENCE AND UNIVERSAL ACCESS AT PASS-THRU

INTEGRATE GLASS FEATURES INTO PAVING, SHADE CANOPY, AND BUILDING COLUMN

WIDEN ALL SIDEWALKS TO EXCEED CITY'S STREETScape GOALS AND ACTIVATE AN EQUITABLE PUBLIC SPACE EDGE

PROVIDE PLACEMAKING OPPORTUNITIES FOR THE COMMUNITY





# CIVIC SPACE DESIGN | COMPARISON



## PREVIOUS UDC PLAN



## PROPOSED UDC PLAN









**STREETSCAPE SITEWALK | NOVEMBER 2, 2021**

**PARTICIPANTS INCLUDED: SOMERVILLE'S MOBILITY DIVISION, DEPARTMENT OF ENGINEERING, ECONOMIC DEVELOPMENT, PSUF, TOOLE DESIGN, KLEINFELDER ENGINEERING, KLOPFER MARTIN DESIGN GROUP...AND PROJECT TEAM; HSH TRANSPORTATION ENGINEERS, MARVEL, US2**



# CIVIC SPACE DESIGN | ANNOTATED RENDERED PLAN





# CIVIC SPACE DESIGN | FULL SITE PLAN





# CIVIC SPACE DESIGN | EXISTING ELEVATION CHANGES

- Existing Crosswalks
- Approximate Existing Elevation

Existing elevations are approximate. The sidewalk is at a maximum grade of 5% on Webster Ave and Prospect Street and the grade is steepest at the Prospect Street bridge approach.



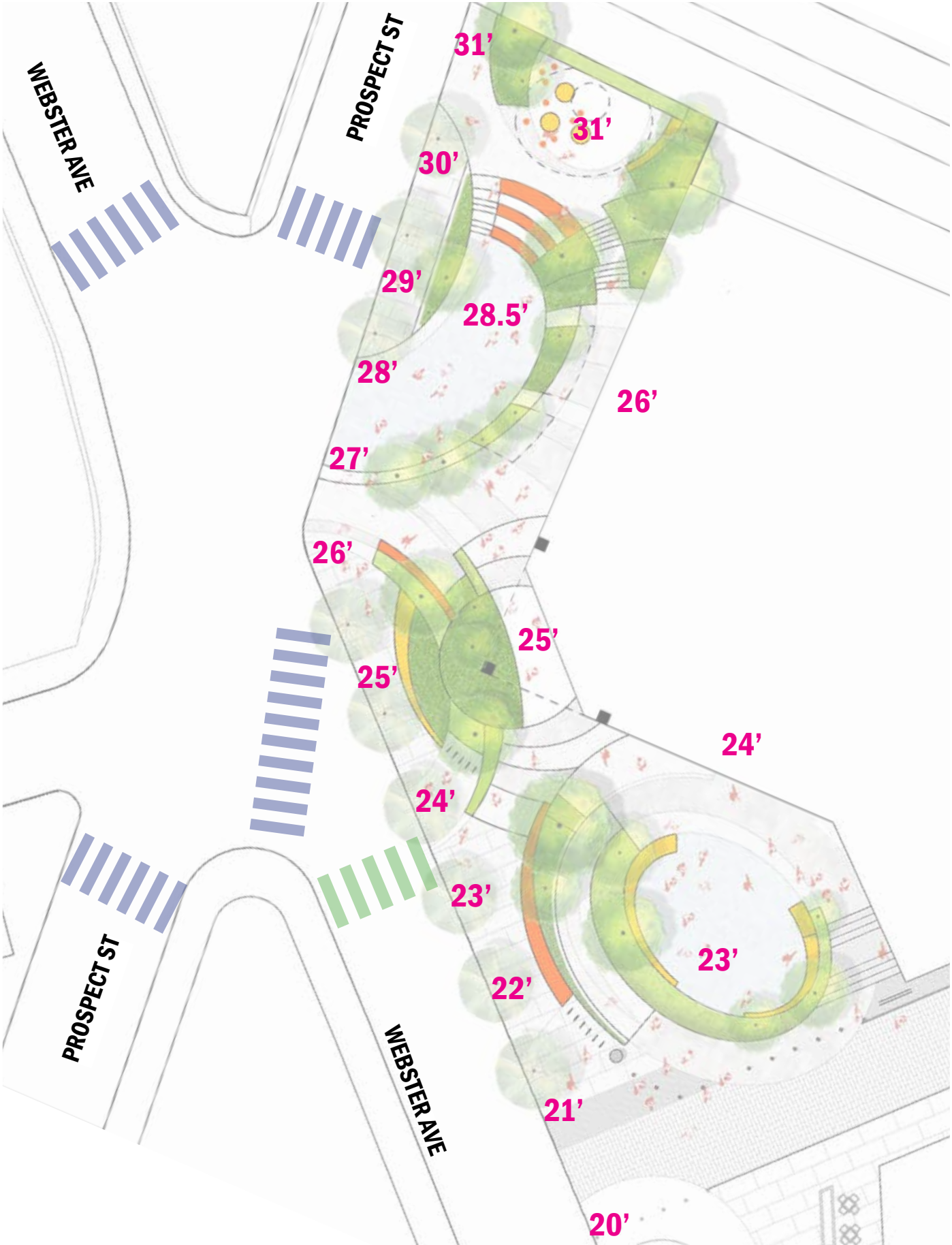


# CIVIC SPACE DESIGN | PROPOSED ELEVATIONS

- Existing Crosswalks
- Recommended Crosswalk

## 28.5' Approximate Proposed Elevations

Proposed elevations are approximate. The sidewalk is at a maximum grade of 5% on Webster Ave and Prospect Street and the grade is steepest at the Prospect Street bridge approach. All proposed grades are designed to tie laterally with the widened sidewalk for universal access and to connect the two primary plazas through an ADA accessible pass-thru at the building corner





# CIVIC SPACE DESIGN | MULTIPLE PATH OPTIONS

- Existing Crosswalks
- Recommended Crosswalk
- Widened Public Sidewalk MIN 12'  
Average Building Setback on Prospect = 64'  
Average Building Setback on Webster = 77'
- Min. 8' Wide Circulation Path





## ADA Accessible Path within Plaza

All levels of the plaza are created to be accessible and inclusive to all. The various plaza spaces meet the levels of the existing sidewalk which has also been expanded to improve streetscape safety and accessibility to points north and south of the plaza.





# CIVIC SPACE DESIGN | PROGRAMMING POSSIBILITIES

-  Pavilion Structure
-  Pop-Up Performance Space
-  Future Public Art / Sculpture
-  Interactive Feature

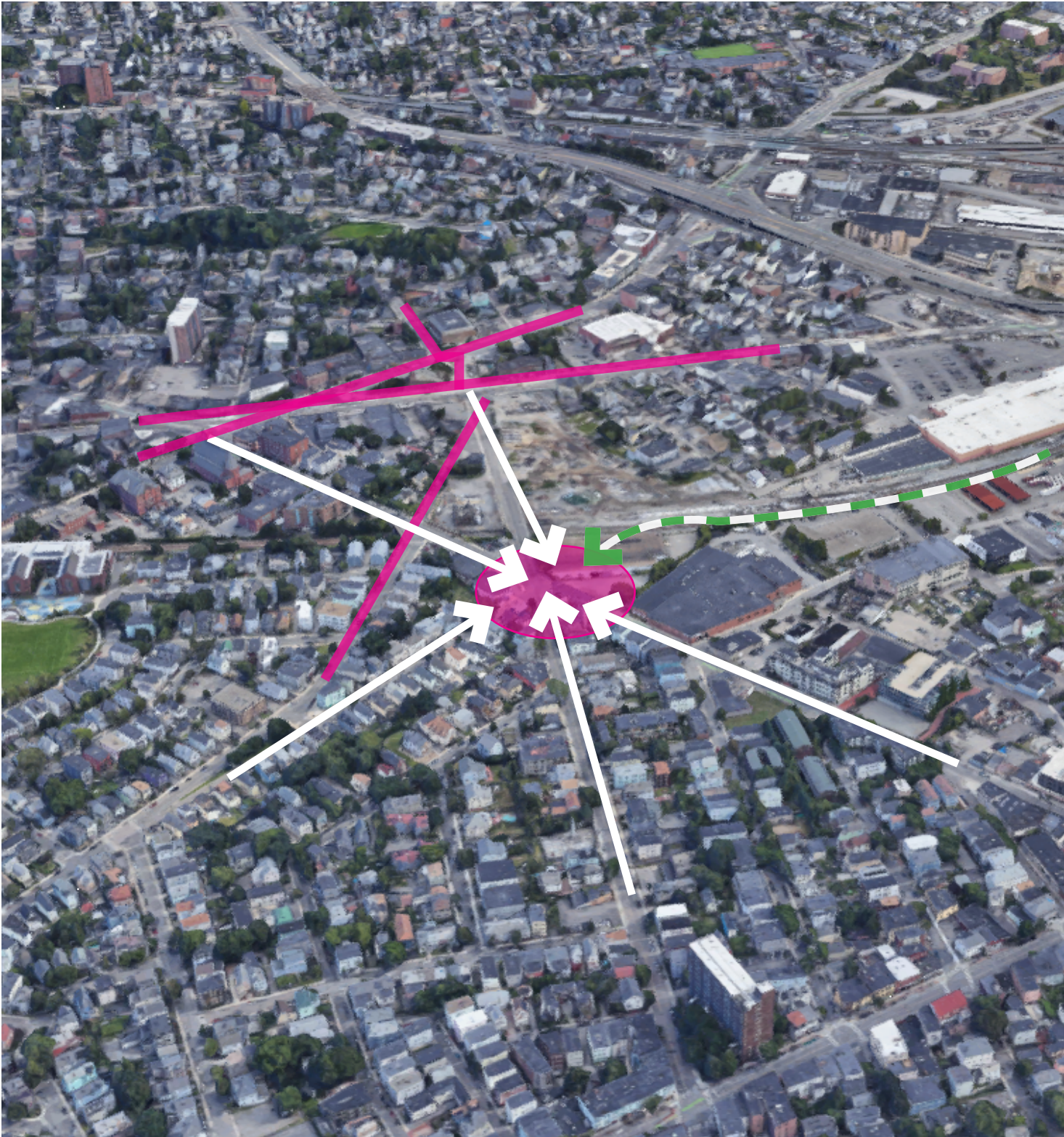
## Potential Programming Options

- Interactive Feature
- Performance Space
- Public Art / Sculpture
- Retail Outdoor Cafe
- Interpretive / Historic
- Gateway Structure
- Movable Seating
- Illumination Interest





CIVIC SPACE DESIGN | PAVILION AS LANDMARK...MEET ME AT THE DISH!



HIGHLY VISIBLE AND ELEVATED LOCATION



SPACES TO GATHER / MEET/ SEE AND BE SEEN



CIVIC SPACE DESIGN | PAVILION INSPIRATION



RECALL / REINTERPRET SITE HISTORY



REINTERPRET HISTORY OF CUT GLASS



CREATE GLASS STRUCTURE THAT IS DISTINCT



CIVIC SPACE DESIGN | PAVILION IDEAS



ROCK CANDY / SUGAR CRYSTALS



CUT GLASS / PUNCH BOWL



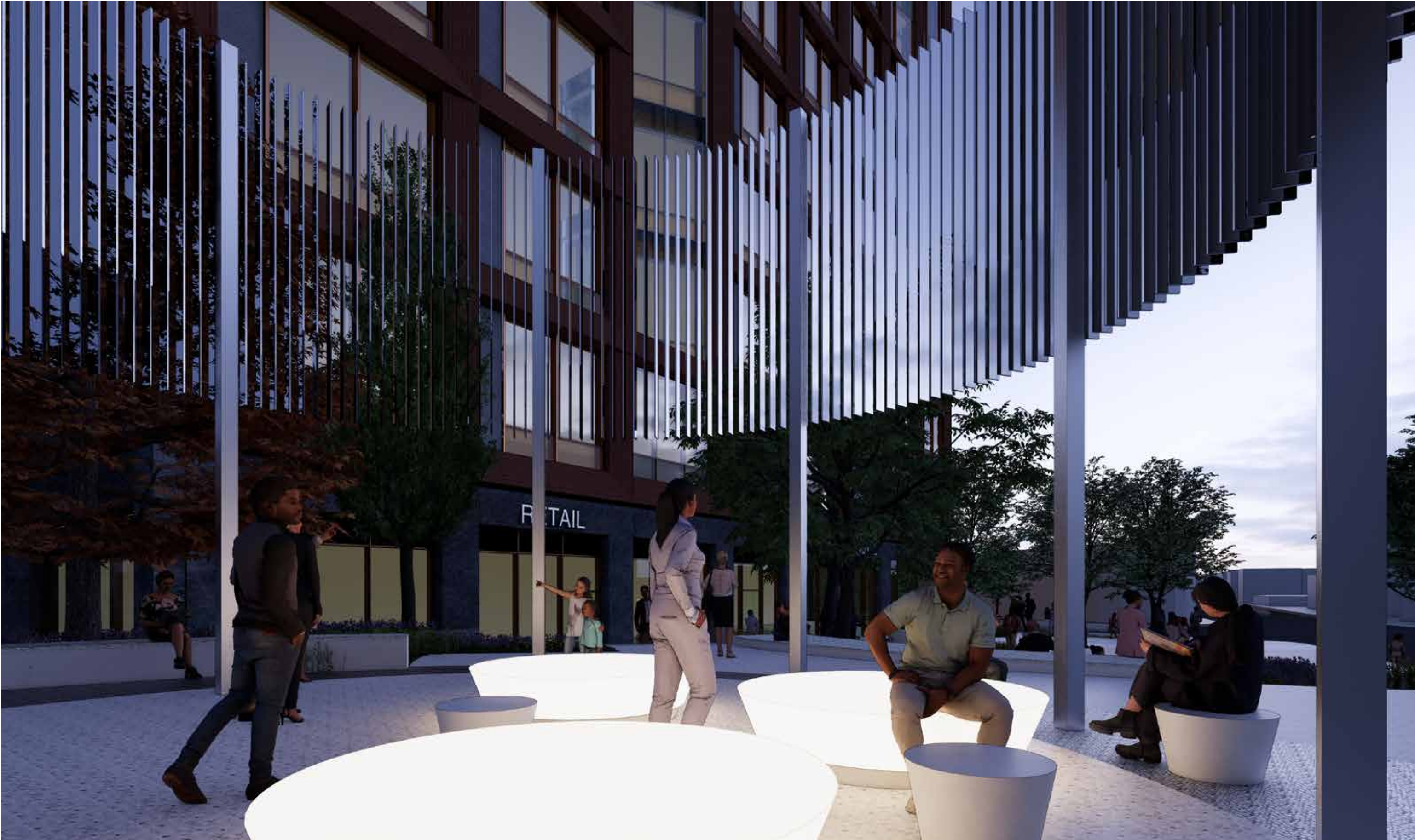
MARSHMALLOW / CAMPFIRE





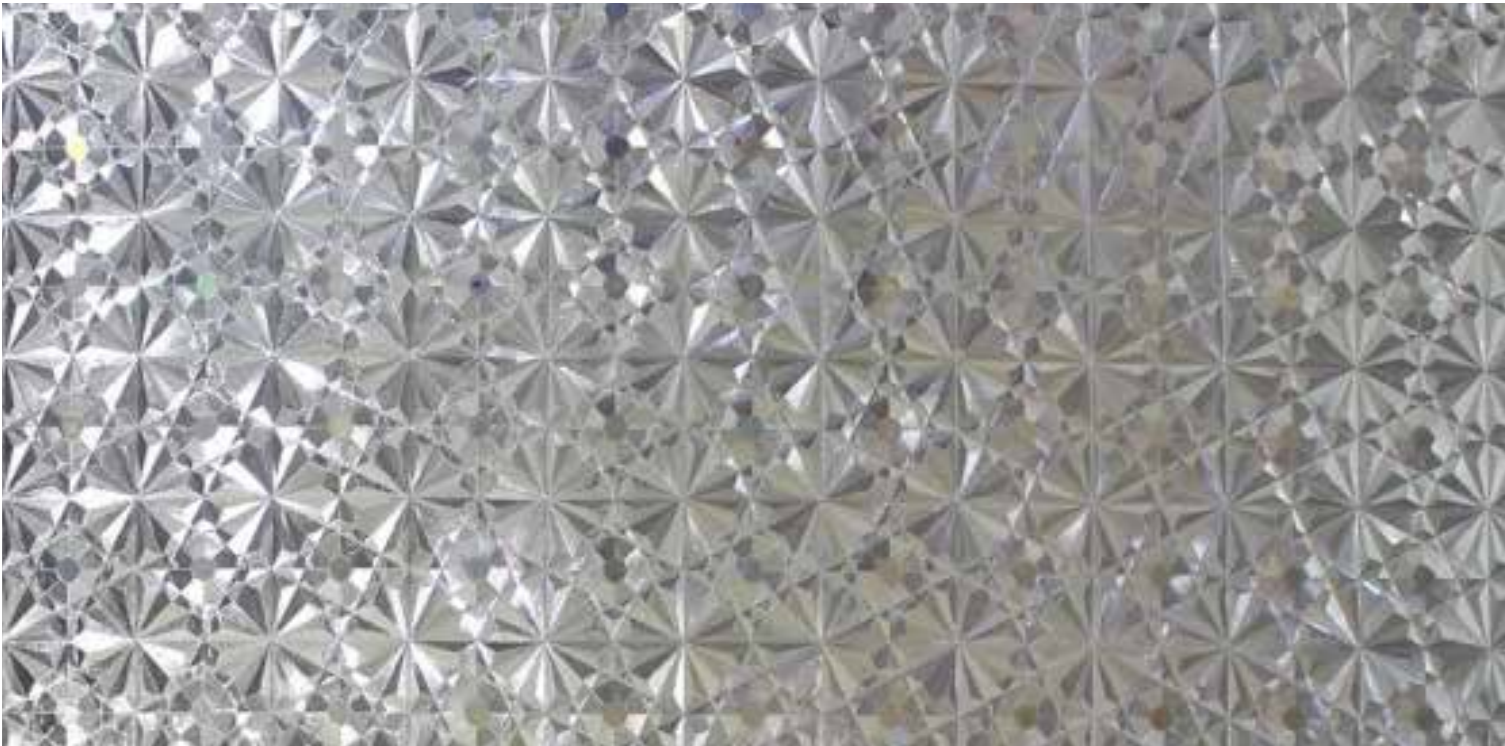




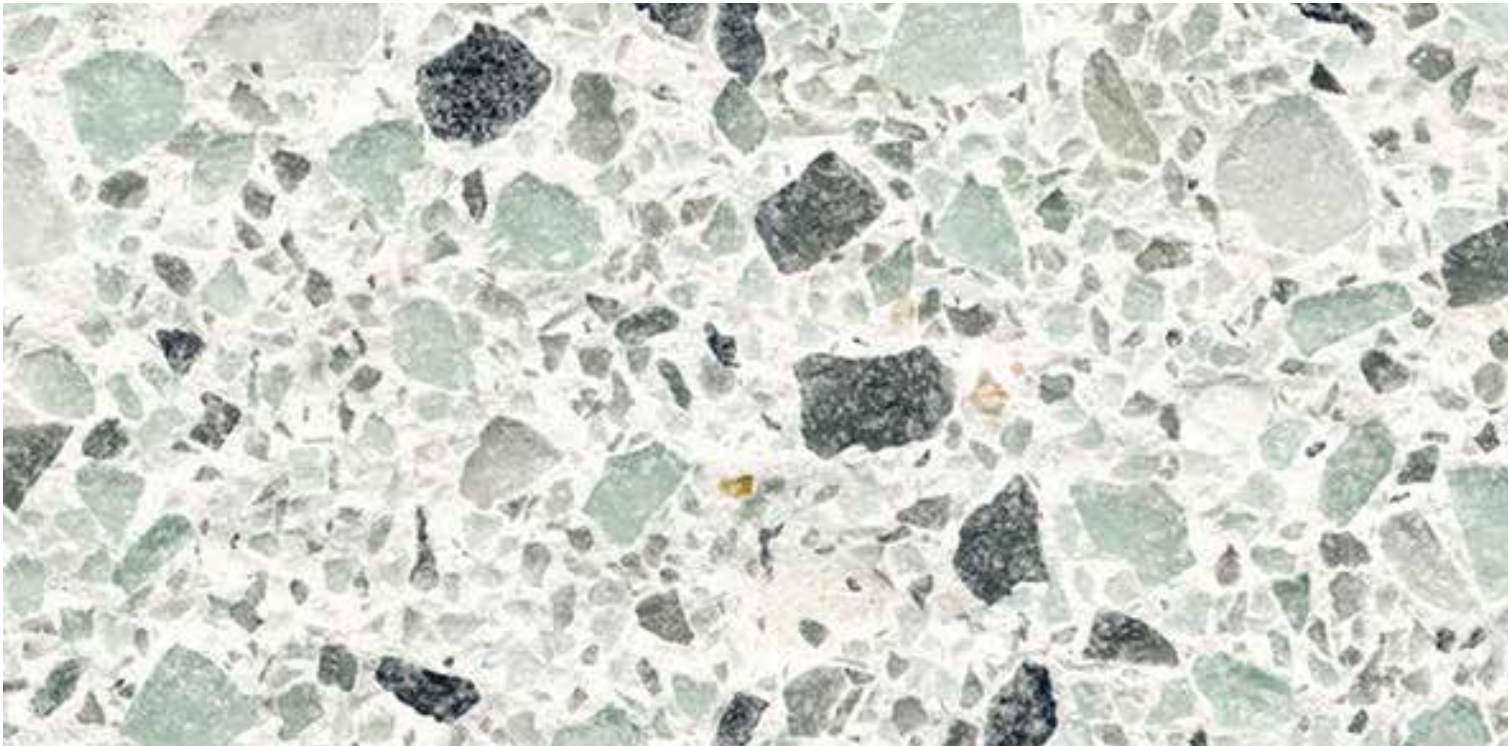




CIVIC SPACE DESIGN | GLASS THEME MATERIALS



CRYSTAL PATTERNING



GLASS AGGREGATE CONCRETE



GLASS CAMPFIRE



ILLUMINATED / REFLECTIVE BEACON







CIVIC SPACE DESIGN | SEATING VARIETY



MOVABLE SEATING AND TABLES



MULTI-DIRECTIONAL SEATING OPTIONS



FIXED INFORMAL SEATING



INTEGRATED SEAT / STEPS



SEAT HEIGHT PLANTER WALLS



ILLUMINATED BENCHES



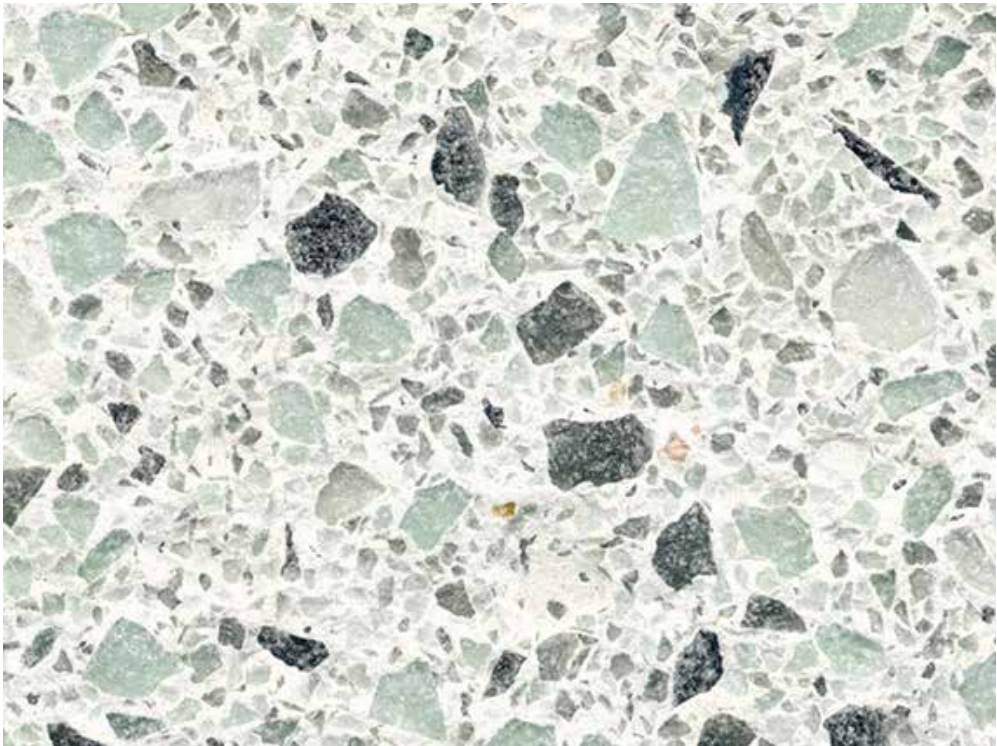
CIVIC SPACE DESIGN | PAVING / HARDSCAPE VARIETY



EXPOSED AGGREGATE



WEATHER / WORN PAVERS (INDSUTRIAL)



GLASS / CONCRETE AGGREGATE



CONTRASTING EXPOSED AGGREGATE



CONTRASTING CIP CONCRETE



TRANSLUSCENT ELEMENTS



CIVIC SPACE DESIGN | PLANTING ZONES



GREEN ROOMS



RICHLY PLANTED UNDERSTORY



SHADE TREES



PLANT DENSELY





CIVIC SPACE DESIGN | OTHER FEATURES



 INTERACTIVE FEATURE



 DARKSKY LIGHTING



 SPACE FOR ART



 ACCENT SPOT LIGHTING





CIVIC SPACE DESIGN | LOWER PLAZA ENTRY FROM WEBSTER AVE





CIVIC SPACE DESIGN | WEBSTER GREEN ROOM





CIVIC SPACE DESIGN | PLAZA LOOKING NORTH TOWARD PAVILION



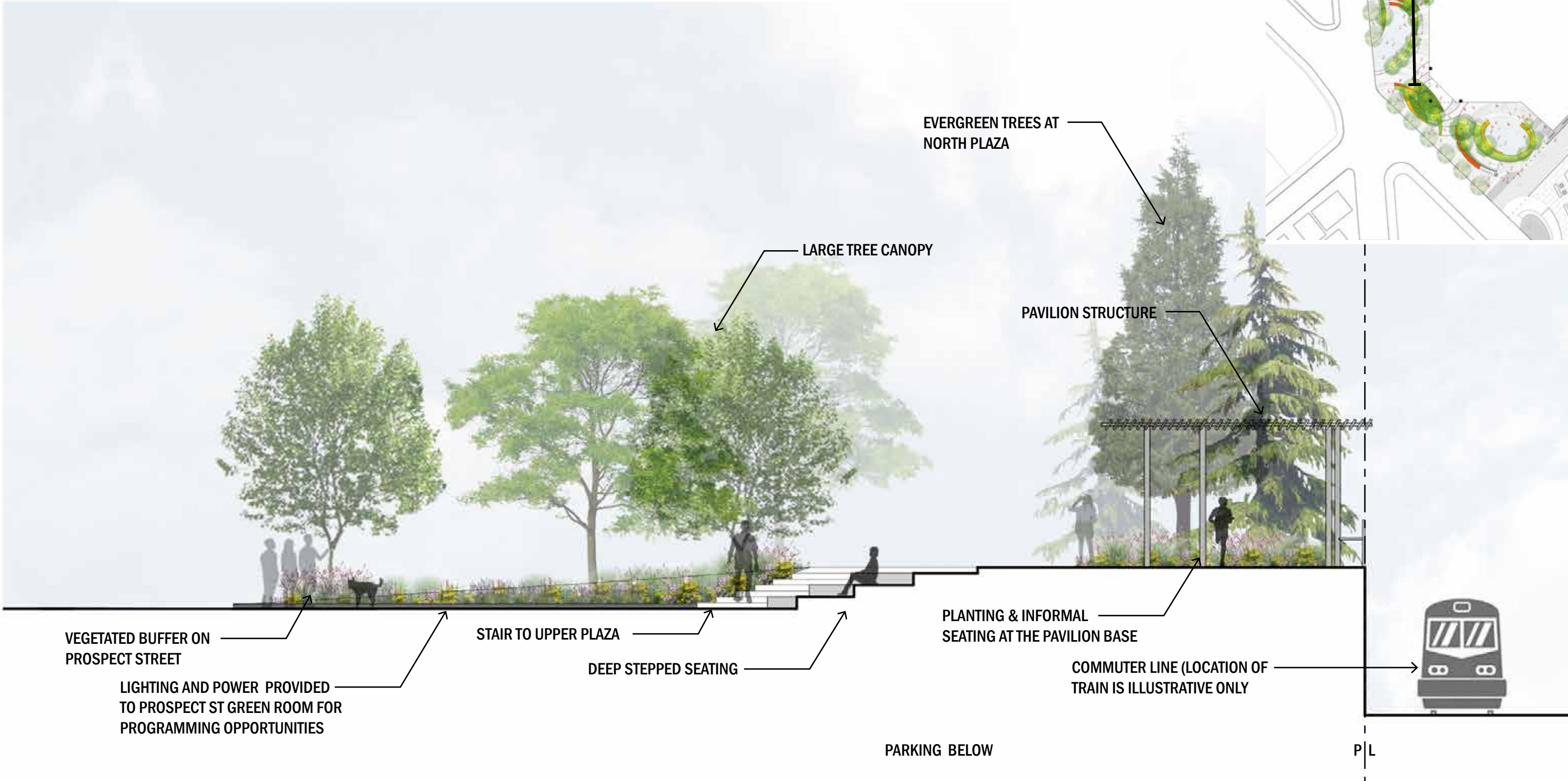


CIVIC SPACE DESIGN | UPPER PLAZA ENTRY FROM PROSPECT ST BRIDGE



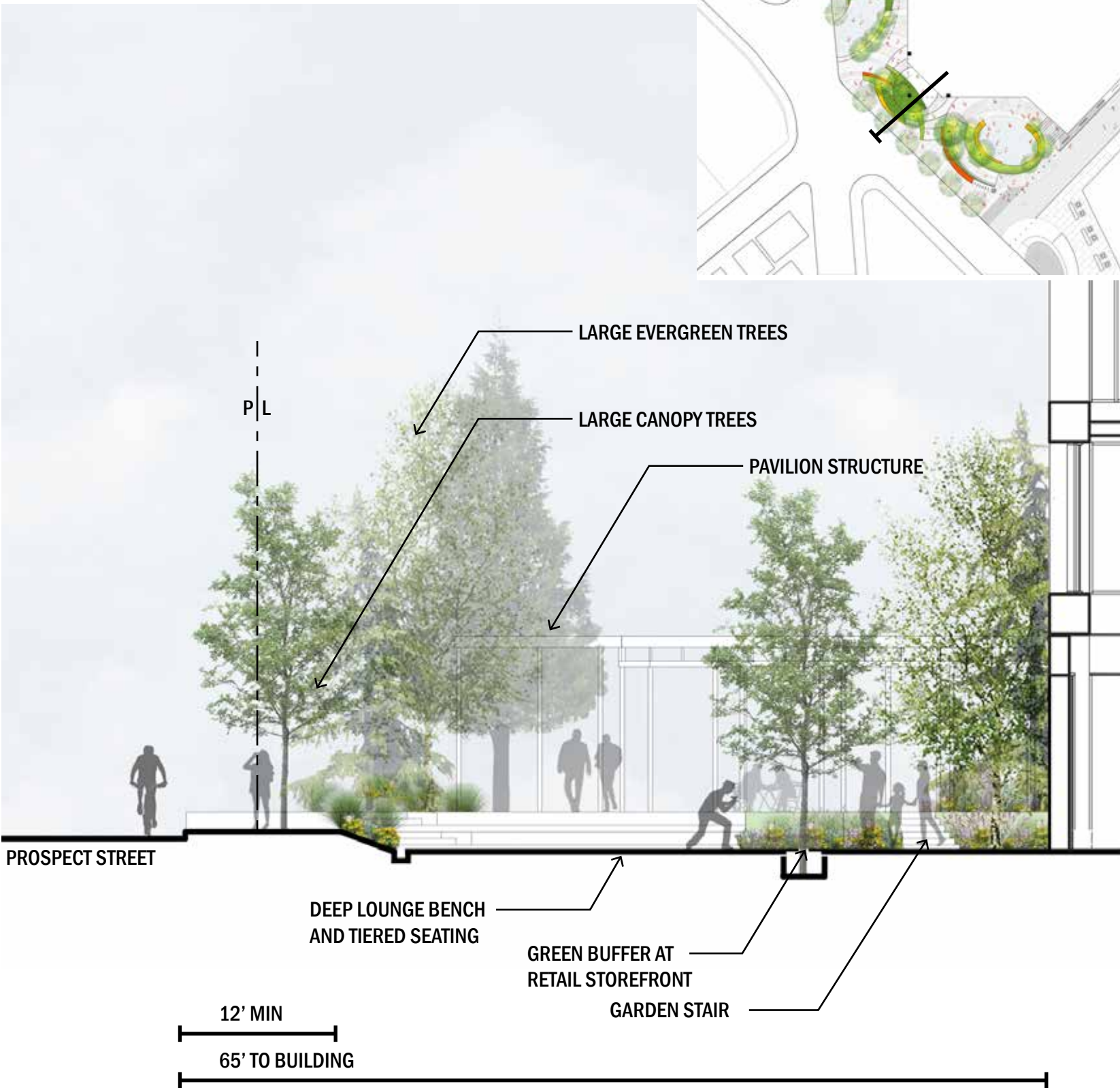
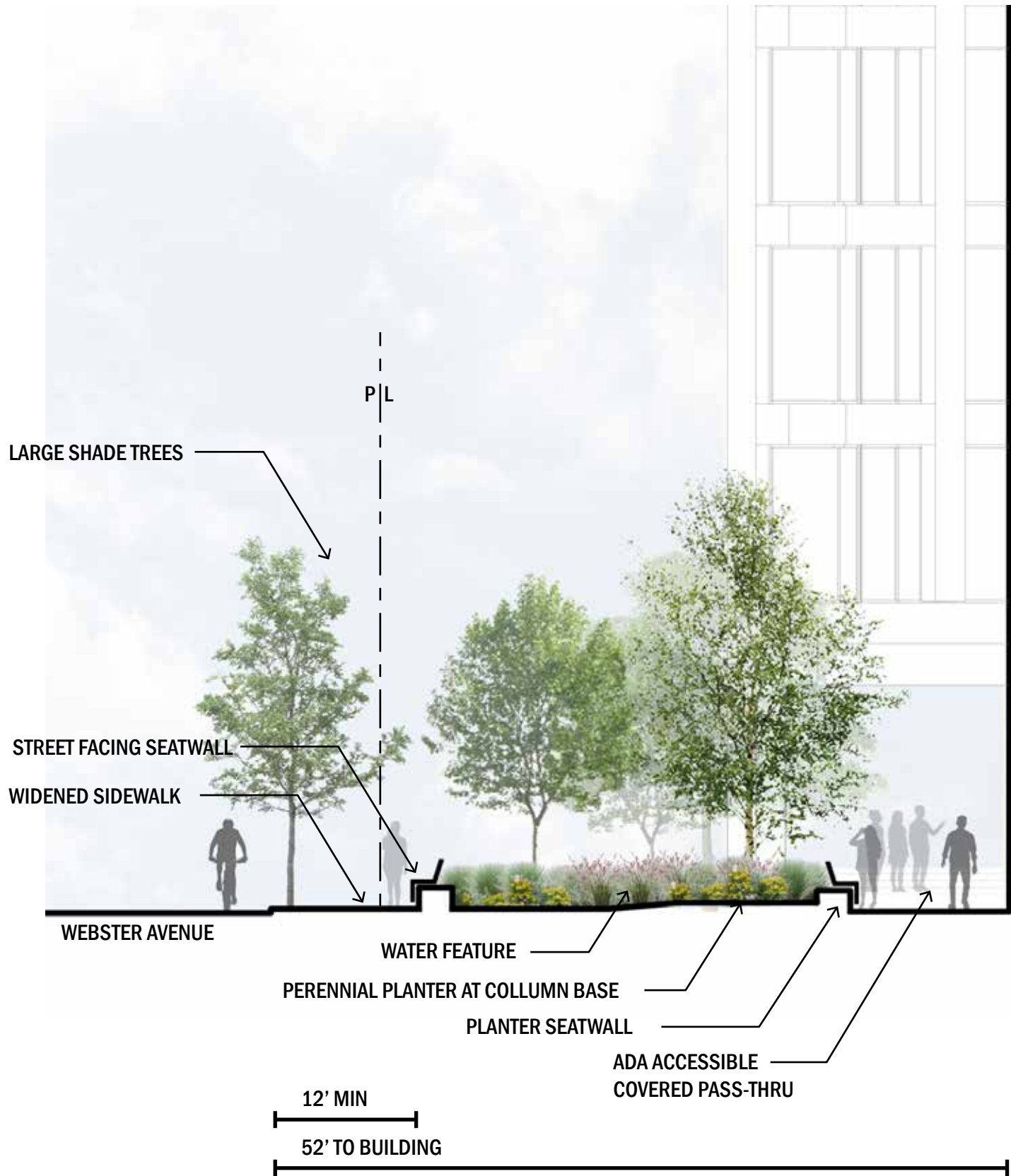


# CIVIC SPACE DESIGN | LANDSCAPE SECTIONS



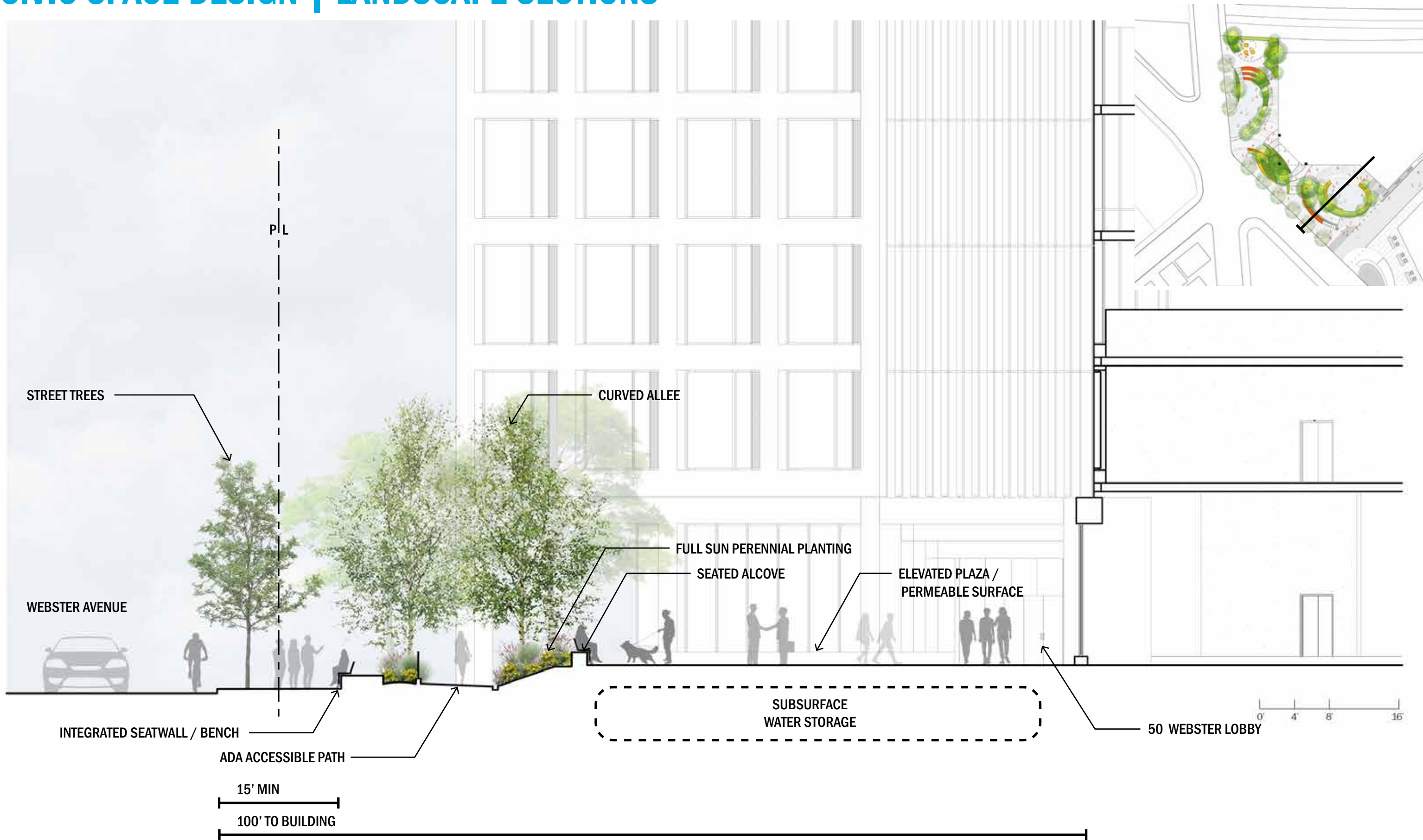


# CIVIC SPACE DESIGN | LANDSCAPE SECTIONS





# CIVIC SPACE DESIGN | LANDSCAPE SECTIONS





CIVIC SPACE DESIGN | FULL PLAZA

